

Ground Floor

Rear atrium: 1003 ft² / 93.24 m²

Open plan workstations: 17

Indicative ratio: 59 ft² / 5.48 m² per person

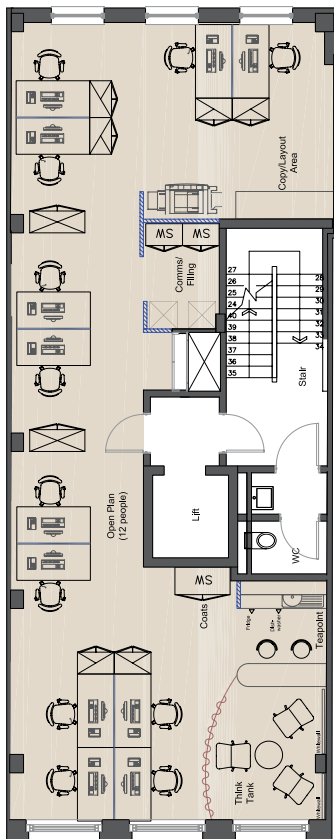
54 Hatton Garden
London EC1N 8HN

Space Planning options
by Asset Interiors.

Marldon

3 Scout Lane
Clapham Old Town
London SW4 0LA

Phone +44 (0) 20 7627 7600
Fax +44 (0) 20 7627 7601



Upper Floor

Open Plan Option.

Area Dimensions: 1020 ft² / 94.8 m²

Workstations: 12

Indicative ratio: 85 ft² / 7.9 m² per person

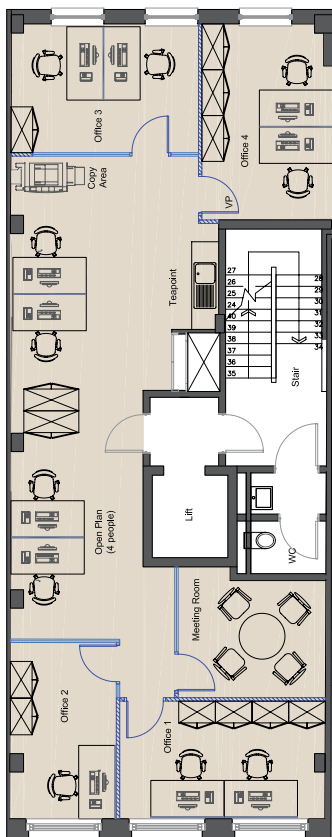
**54 Hatton Garden
London EC1N 8HN**

Space Planning options
by Asset Interiors.

Marldon

3 Scout Lane
Clapham Old Town
London SW4 0LA

Phone +44 (0) 20 7627 7600
Fax +44 (0) 20 7627 7601



Upper Floor

Cellular and Open Plan Option.

Area dimensions: 1020 ft² / 94.8 m²

Workstations: Single office 3, Open plan 6, Total headcount 9

Indicative ratio: 113 ft² / 10.53 m² per person

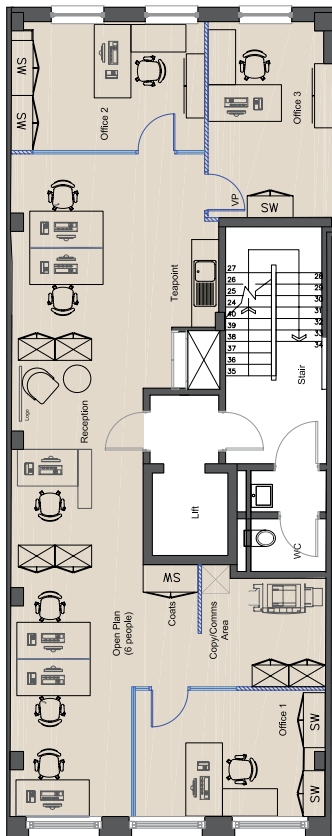
54 Hatton Garden
London EC1N 8HN

Space Planning options
by Asset Interiors.

Marldon

3 Scout Lane
Clapham Old Town
London SW4 0LA

Phone +44 (0) 20 7627 7600
Fax +44 (0) 20 7627 7601



Upper Floor

Cellular Plan Option.

Area dimensions: 1020 ft² / 94.8 m²

Workstations: Single office 1, Double office 6, Open plan 4, Total headcount 11

Indicative ratio: 93 ft² / 8.61 m² per person

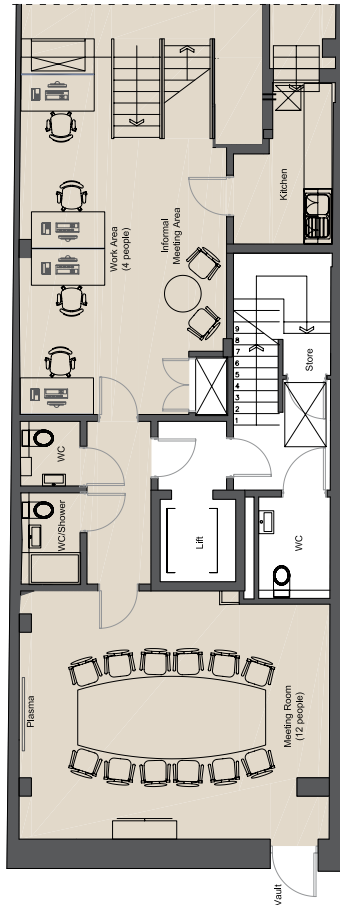
54 Hatton Garden
London EC1N 8HN

Space Planning options
by Asset Interiors.

Marldon

3 Scout Lane
Clapham Old Town
London SW4 0LA

Phone +44 (0) 20 7627 7600
Fax +44 (0) 20 7627 7601



Lower Ground Floor

Open Plan and Meeting Room Option.

Area dimensions: 785 ft² / 72.9 m²

Workstations: 4

Meeting Room: 12

54 Hatton Garden
London EC1N 8HN

Space Planning options
by Asset Interiors.

Marldon

3 Scout Lane
Clapham Old Town
London SW4 0LA

Phone +44 (0) 20 7627 7600
Fax +44 (0) 20 7627 7601