

Lower Ground Floor

**54 Hatton Garden
London EC1N 8HN**

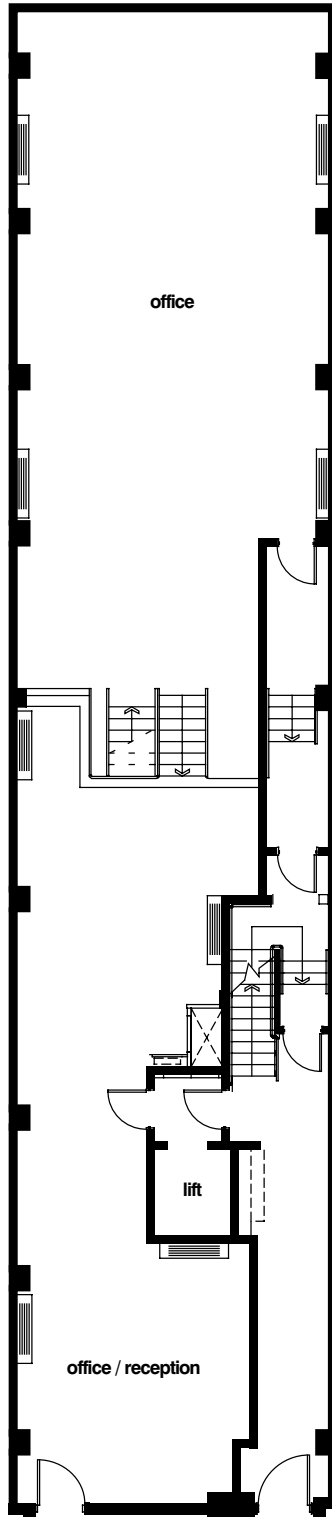
NIA 785 ft² / 72.9 m²

Plans for guidance only.

Marldon

**3 Scout Lane
Clapham Old Town
London SW4 0LA**

Phone +44 (0) 20 7627 7600
Fax +44 (0) 20 7627 7601



Ground Floor

**54 Hatton Garden
London EC1N 8HN**

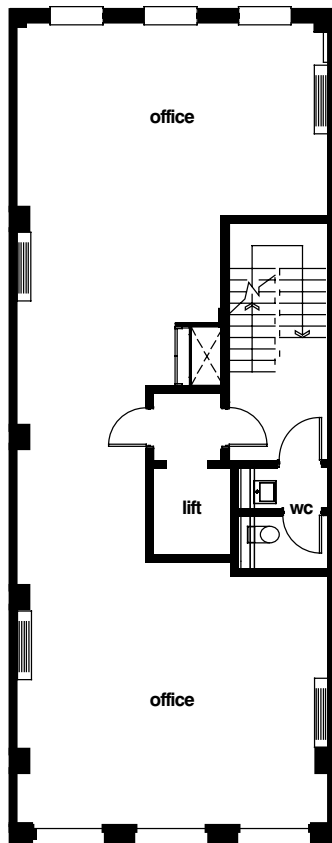
NIA 1,760 ft² / 163.5 m²

Plans for guidance only.

Marldon

3 Scout Lane
Clapham Old Town
London SW4 0LA

Phone +44 (0) 20 7627 7600
Fax +44 (0) 20 7627 7601



First Floor Plan

**54 Hatton Garden
London EC1N 8HN**

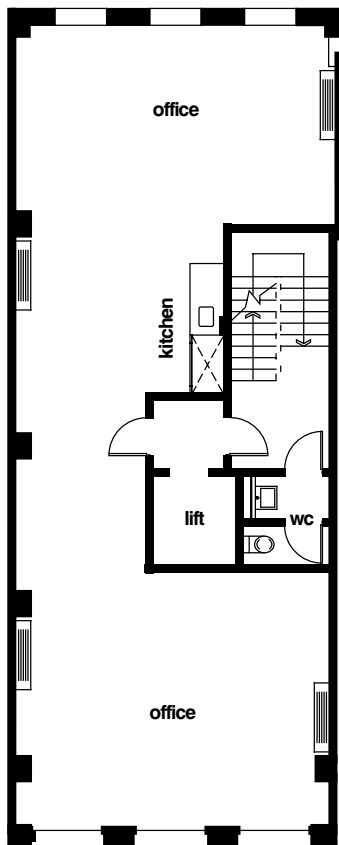
NIA 960 ft² / 89.2 m²

Plans for guidance only.

Marldon

**3 Scout Lane
Clapham Old Town
London SW4 0LA**

Phone +44 (0) 20 7627 7600
Fax +44 (0) 20 7627 7601



Second, Third & Fourth Floor

**54 Hatton Garden
London EC1N 8HN**

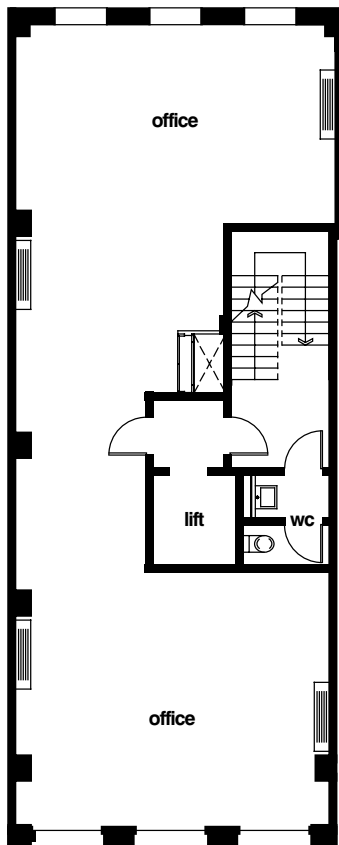
NIA 1,020 ft² / 94.8 m²

Plans for guidance only.

Marldon

3 Scout Lane
Clapham Old Town
London SW4 0LA

Phone +44 (0) 20 7627 7600
Fax +44 (0) 20 7627 7601



Fifth Floor

**54 Hatton Garden
London EC1N 8HN**

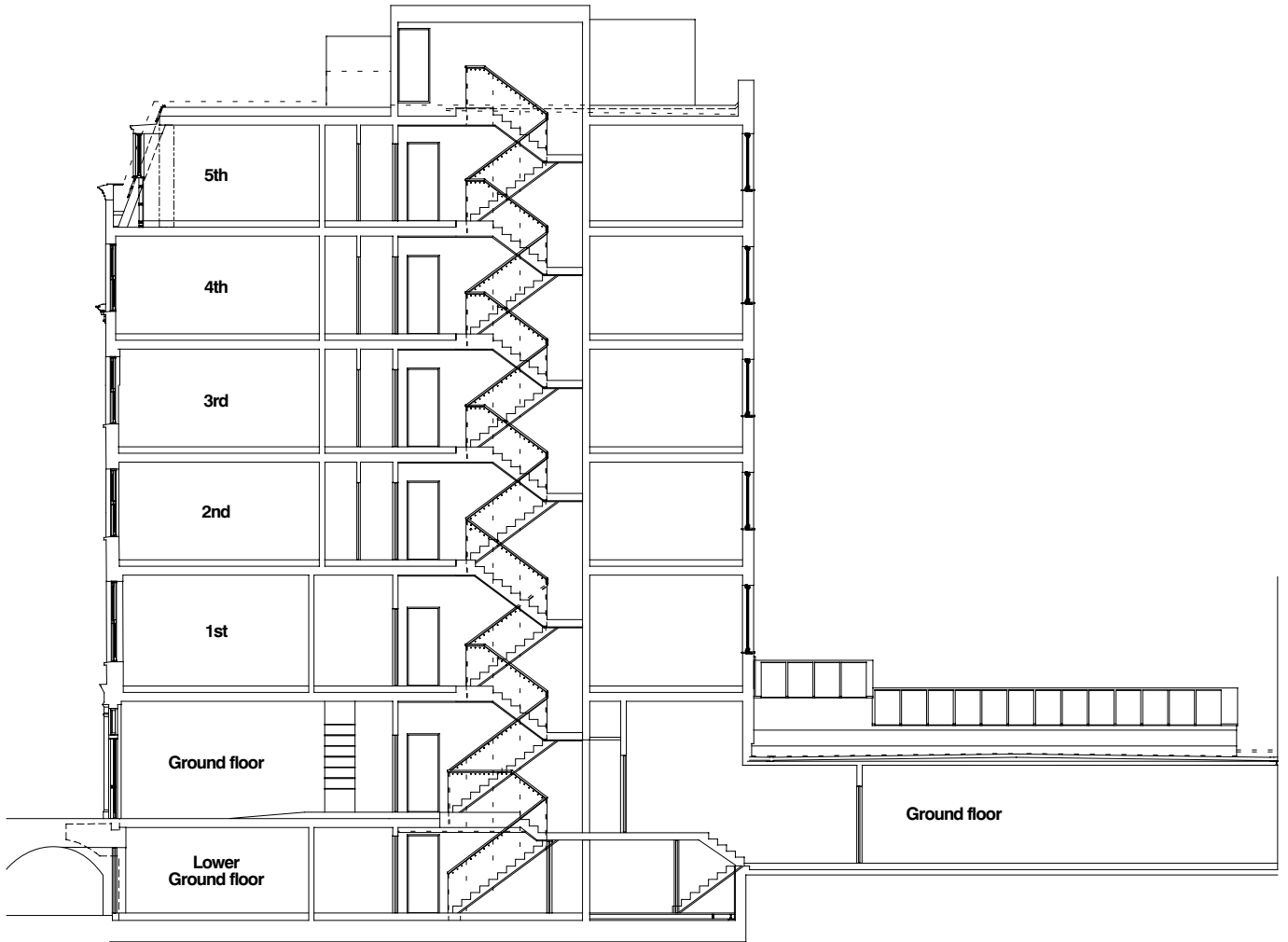
NIA 940 ft² / 87.3 m²

Plans for guidance only.

Marldon

3 Scout Lane
Clapham Old Town
London SW4 0LA

Phone +44 (0) 20 7627 7600
Fax +44 (0) 20 7627 7601



Section Through Building

54 Hatton Garden
London EC1N 8HN

Marldon

3 Scout Lane
Clapham Old Town
London SW4 0LA

Plans for guidance only.

Phone +44 (0) 20 7627 7600
Fax +44 (0) 20 7627 7601